

# The S-Class Saloon



Mercedes-Benz







Attracts so much attention.  
Now even more attentive in return.

What can we give someone who's already been everywhere? What surprises are left, when every upcoming situation is foreseen in advance? How do you persuade people who are themselves already experts in persuasion? By showing attention. By showing respect. By showing appreciation. In each case to a hitherto unknown level. Enjoy the new S-Class. **Feel Intelligent Drive.**

# No need to prove anything to anyone. Except to itself.

For example, that you cannot be too careful in the way you manage resources. That the ultimate in refinement is still some way off. That economy and opulence are not mutually exclusive concepts, but ones that complement each other perfectly. As a case in point, the new S-Class makes its debut with a completely redesigned generation of engines. With the most intelligent assistance systems in its class. With sensory stimuli that captivate both body and soul.







<sup>1</sup> ENERGIZING Comfort control available as an option from the 4<sup>th</sup> quarter of 2017.



## An impressive way of slowing things down.

There are just so many technologies that are designed to speed up our lives. With the new S-Class, we present a package of equipment and appointments designed to put your world on pause for just a moment: ENERGIZING Comfort control<sup>1</sup>, for example, involves the intelligent combination and activation of colours, sounds, lights, fragrances and even seat massage functions. Even small impulses can revitalise or relax and, by doing so, improve performance.



## How do you stay so calm?

Do you wonder this too, sometimes? No other luxury saloon steers quite such a self-assured route between style and status. Finely drawn lines and distinctive details give the new S-Class even more presence, without it ever appearing obtrusive. Sound familiar?





Constantly reinventing itself.  
Never changing.





## As in Formula 1. Now also in the S-Class.

The launch of the new S-Class sees Mercedes-Benz introducing a completely redesigned generation of engines. New standards of efficiency are set by the six-cylinder in-line diesel engines. The new V8 biturbo engine in the S 560 has a fascination of its own, thanks to the Mercedes-AMG high-performance components used. The “hot inside V”, as it is called, gives the car the same sort of turbocharging technology as is used in Formula 1. The two turbochargers are located within the “V” of the cylinder banks; this makes for

compact dimensions, optimum response times and low exhaust emissions. This configuration also includes an intelligent cylinder shutoff system that helps to reduce fuel consumption, since wherever appropriate the engine will operate in an efficient 4-cylinder mode. If more output is required, the additional cylinders kick back into action in just fractions of a second. Add to this the smooth running that is such a hallmark of the S-Class and the result is a unique and exciting combination.



## Using innovation to counteract lateral forces.

MAGIC BODY CONTROL is an option that combines the active chassis suspension with continuously adjustable dampers and ROAD SURFACE SCAN. With the aid of a stereo camera, the carriageway surface ahead is scanned precisely to allow the damping of each individual wheel to be optimally adjusted in advance to the impending bumps. The new curve inclination function has the effect of causing the body of the vehicle to lean inwards by up to 2.65 degrees on bends. In this way the lateral forces experienced are significantly reduced, so noticeably enhancing both dynamic handling and comfort.

## When driving comfort becomes being-driven comfort.

The optional Active Distance Assist system DISTRONIC represents a milestone on the way to automated driving. It is able to maintain automatically the correct distance from vehicles ahead in city traffic, on country roads and motorways, and even to follow them, at speeds up to 210 km/h. The driver's workload is reduced, as there is no need to press the brake pedal or accelerator when driving normally, and there is noticeable steering assistance.



## The standard equipment.

Along with all the innovations and comfort features, the highlight of the standard specification of the S-Class is something priceless: presence and charisma. The radiator grille has been completely redesigned to make it even more elegant and delicate in appearance. The struts are painted high-gloss black – a minor detail that gives the car major appeal. The expressive front end is further enhanced by the LED High Performance headlamps, including illuminated “Mercedes-Benz” lettering.

## The AMG Line.

The AMG Line introduces an exclusive touch of motorsport to the new S-Class. The AMG bodystyling comprises discreetly powerful front and rear aprons, as well as side sill panels, that make the vehicle appear to sit lower on the road. The even sportier AMG Line Plus welcomes its occupants into AMG sports seats in nappa leather. Automotive enthusiasts will particularly welcome the enhanced portfolio of AMG wheels, featuring new designs that perfectly complement the S-Class’s ambition to lead.



## The Exclusive package.

The stylishly coordinated combination of high-quality appointments meets the highest expectations with regard to comfort, quality and design. Generous use of Exclusive nappa leather and large areas of wood trim enhance the exclusivity of the interior. The effect is heightened by other fine details such as the illuminated door sill panels with “Mercedes-Benz” lettering, the stainless-steel boot sill and the roof liner and sun visors, which are trimmed in elegant DINAMICA microfibre.

## designo.

Exclusive designo trim and leather appointments add a major element of personality to the interior and testify to the superb craftsmanship that has gone into the car. New trim options include designo open-pore ash wood in black or brown. A new, somewhat avant-garde highlight among the upholstery options is the designo Exclusive semi-aniline leather in the colour combination silk beige/deep-sea blue.

# Upholstery and trim.

## Upholstery

201	black	578	magma grey/espresso brown <sup>2</sup>
205	silk beige/espresso brown	801	black <sup>3</sup>
214	nut brown/black	805	silk beige/espresso brown <sup>3</sup>
501	black <sup>1</sup>	814	nut brown/black <sup>3</sup>
505	silk beige/espresso brown <sup>1</sup>	815	porcelain/black <sup>3</sup>
514	nut brown/black <sup>1</sup>	818	magma grey/espresso brown <sup>3</sup>
515	porcelain/black <sup>1</sup>	851	black <sup>4</sup>
518	magma grey/espresso brown <sup>1</sup>	855	silk beige/espresso brown <sup>4</sup>
524	mahogany brown/silk beige <sup>1</sup>	864	nut brown/black <sup>4</sup>
551	black <sup>2</sup>	865	porcelain/black <sup>4</sup>
554	mahogany brown/silk beige <sup>2</sup>	868	magma grey/espresso brown <sup>4</sup>
555	silk beige/espresso brown <sup>2</sup>	962	designo silk beige/deep-sea blue <sup>5</sup>
574	nut brown/black <sup>2</sup>	965	designo silk beige/titanium grey pearl <sup>5</sup>
575	porcelain/black <sup>2</sup>	975	designo silk beige/satin red pearl <sup>5</sup>

## Trim

734	High-gloss brown eucalyptus wood
729	High-gloss black poplar wood <sup>3,6</sup>
H29	High-gloss brown burr walnut wood <sup>3</sup>
H21	designo black piano lacquer <sup>3</sup>
H16	designo black flowing lines piano lacquer <sup>3</sup>
H28	designo brown open-pore ash wood <sup>3</sup>
H27	designo black open-pore ash wood <sup>3</sup>
H10	AMG carbon fibre/black piano lacquer <sup>3</sup>

## Leather



201



205

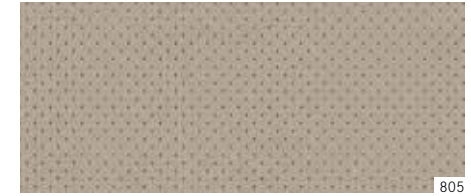


214

## Nappa leather



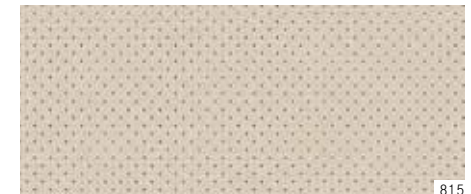
801



805



814



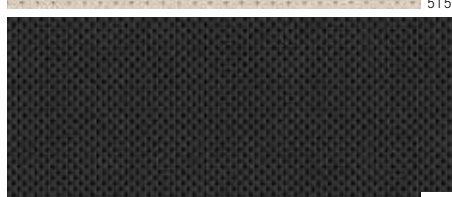
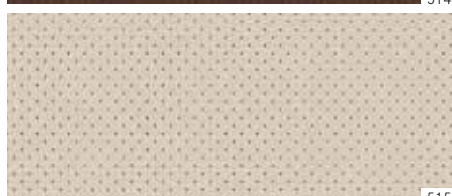
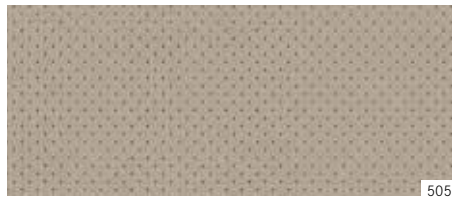
815



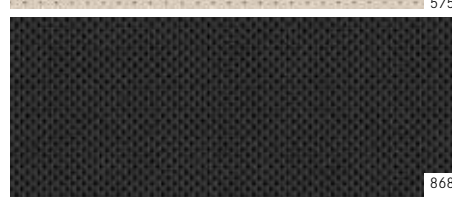
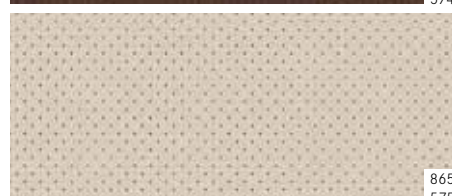
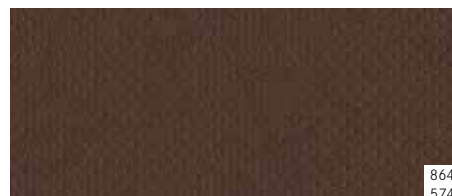
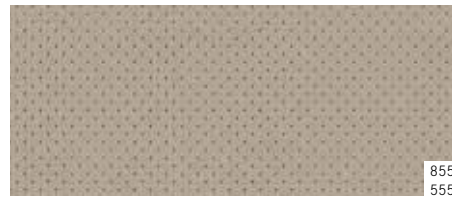
818

<sup>1</sup> Part of the optional Exclusive package. <sup>2</sup> Part of the optional equipment package AMG Line Plus in conj. w. the optional Exclusive package. <sup>3</sup> Optional extra. <sup>4</sup> Part of the optional equipment package AMG Line Plus. <sup>5</sup> Optional extra in conj. w. the optional Exclusive package. <sup>6</sup> Standard equipment in conj. w. the optional equipment package AMG Line and AMG Line Plus.

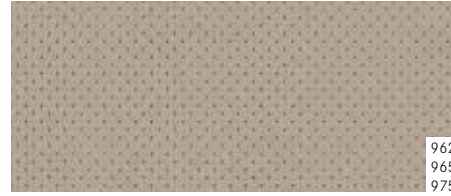
Exclusive nappa leather



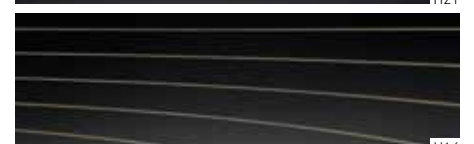
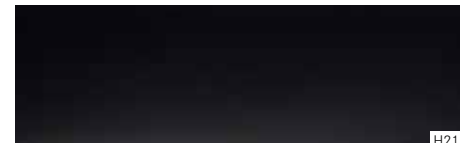
AMG nappa leather/AMG Exclusive nappa leather



designo Exclusive leather



Trim



# Paintwork.

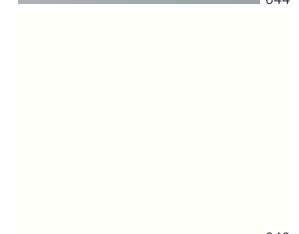
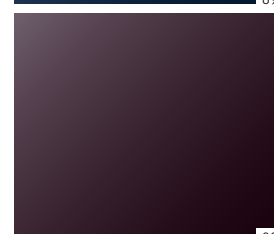
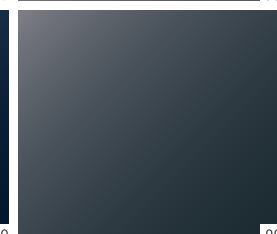
## Non-metallic paint



## Metallic paints<sup>1</sup>



## designo paint<sup>1</sup>



---

### Non-metallic paint

---

040 black

---

### Metallic paints<sup>1</sup>

---

183 magnetite black

197 obsidian black

775 iridium silver

890 cavansite blue

897 ruby black

988 diamond silver

989 emerald green

992 selenite grey

998 anthracite blue

---

### designo paint<sup>1</sup>

---

799 designo diamond white bright

---

### designo Manufaktur paints<sup>1</sup>

---

033 designo mocha black metallic

044 designo allanite grey magno

049 designo cashmere white magno

---

<sup>1</sup> Optional extra.

Additional individual designo paint finishes are available from your Mercedes-Benz dealer.

# Technical data.

Cylinder number/arrangement
Displacement (cc)
Rated output <sup>1</sup> (kW (hp) at rpm)
Rated torque <sup>1</sup> (Nm at rpm)
Transmission
Acceleration 0 to 100 km/h (secs)
Top speed (km/h)
Tyres, front
Tyres, rear
Fuel
Fuel consumption <sup>3</sup> (l/100 km)
Urban
Extra-urban
Combined
CO <sub>2</sub> emissions <sup>3</sup> combined (g/km)
Emission class <sup>4</sup> /efficiency class <sup>5</sup>
Tank capacity/of which reserve (l)
Boot capacity <sup>6</sup> (l)
Kerb weight <sup>7</sup> (kg)
Perm. GVW (kg)

## Diesel engines

### S 350 d 4MATIC

in-line/4
2925
210 (286)/3400-4600
600/1200-3200
9G-TRONIC
5.8 [5.8]
250 <sup>2</sup> [250 <sup>2</sup> ]
245/55 R 17
245/55 R 17
Diesel
6.9-6.7 [6.9-6.7]
5.0-4.8 [5.0-4.8]
5.7-5.5 [5.7-5.5]

### S 400 d 4MATIC

in-line/4
2925
250 (340)/3600-4400
700/1200-3200
9G-TRONIC
5.2 [5.2]
250 <sup>2</sup> [250 <sup>2</sup> ]
245/50 R 18
245/50 R 18
Diesel
6.9-6.8 [6.9-6.8]
5.0-4.8 [5.0-4.8]
5.7-5.6 [5.7-5.6]

## Petrol engine

### S 560 4MATIC

V/8
3982
345 (469)/5250-5500
700/2000-4000
9G-TRONIC
4.6 [4.6]
250 <sup>2</sup> [250 <sup>2</sup> ]
245/50 R 18
245/50 R 18
Premium-grade petrol
11.8-11.6 [11.8-11.6]
7.1-6.8 [7.1-6.8]
8.8-8.5 [8.8-8.5]

200-195 [200-195]
Euro 6/C [Euro 6/C]
80 (8.0)
530
2100/665 [2125/680]
2765 [2805]

**The best for your engine:**  
Mercedes-Benz genuine engine oils.

<sup>1</sup> Details of rated power and rated torque in accordance with Directive (EC) No. 595/2009 in the currently applicable version. <sup>2</sup> Electronically governed. <sup>3</sup> The figures shown for the fuel consumption and the CO<sub>2</sub> emissions were obtained in accordance with the prescribed measuring process (§2 Nos. 5, 6, 6a Pkw-EnVKV (passenger car energy labelling ordinance) in the currently applicable version). The figures are not based on an individual vehicle and do not constitute part of the product offer; they are provided solely for purposes of comparison between different vehicle models. Figures will vary according to the wheels/tyres fitted. <sup>4</sup> Valid within the European Union only. Country-specific variations possible. <sup>5</sup> Determined on the basis of the measured CO<sub>2</sub> emissions, taking account of the vehicle mass. Applicable in Germany only. <sup>6</sup> Figures in accordance with Directive 2007/46/EC in the currently applicable version. <sup>7</sup> Figures for kerb weight in accordance with Directive 92/21/EC in the currently applicable version (kerb weight with fuel tank 90 percent full, with driver, 68 kilograms, and luggage, 7 kilograms) for standard-specification vehicles. Optional extras and accessories generally increase this figure, with a corresponding reduction in payload. Further technical details are available online at: [www.mercedes-benz.com](http://www.mercedes-benz.com)



**Mercedes-Benz is one of the founding partners of the “Laureus Sport for Good Foundation”.**

Since the foundation was established in 2000, Mercedes-Benz has been supporting and promoting the aims and values of this worldwide non-profit-making programme: to use social sports projects to improve the lives of children and young people who are disadvantaged or suffering from illness. Laureus has become a fundamental element of Mercedes-Benz’s social responsibility. Every new Mercedes is an ambassador embodying these values. In buying a Mercedes you are supporting the “Laureus Sport for Good Foundation”.

**Please note:** changes may have been made to the product since this brochure went to press (17.01.2017). The manufacturer reserves the right to make changes to the design, form, colour and specification during the delivery period, provided these changes, while taking into account the interests of the vendor, can be deemed reasonable with respect to the purchaser. Where the vendor or the manufacturer uses symbols or numbers to describe an order or the subject of an order, no rights may be derived solely from these. The illustrations may show accessories and items of optional equipment which are not part of standard specification. Colours may differ slightly from those shown in the brochure, owing to the limitations of the printing process. This brochure is distributed internationally. It provides a general indication of the range of models, features, optional extras, colours and/or services available in various countries. Some of the models, features, optional extras, colours and/or services shown may not be available in your country or may only be available in a different specification. For current and more specific information in relation to the range of models, features, optional extras, colours and/or services available in your country, and their pricing, you should contact your nearest authorised Mercedes-Benz Passenger Car Dealer.

**[www.mercedes-benz.com](http://www.mercedes-benz.com)**

Daimler AG, Mercedesstr. 137, 70327 Stuttgart MS/MAC 6701 · 0619 · 02-00/0517

**Take-back of end-of-life vehicles.** At the end of its life, you can return your S-Class to us for environment-friendly disposal in accordance with the European Union (EU) End-Of-Life Vehicle Directive. But that day lies a long way off.

A network of vehicle take-back depots and dismantlers has been established to make it as easy as possible for you to return your vehicle. You can leave it at any of these points free of charge and, by doing so, make an important contribution to completing the recycling process and conserving resources.

For further information about the recycling and disposal of end-of-life vehicles, and the take-back conditions, please visit the national Mercedes-Benz website for your country.